

J. A. ZURN MFG. CO.

Plumbing Drainage for All Building Requirements

ERIE, PA.

SALES OFFICES IN ALL PRINCIPAL CITIES

ROOF DRAINS

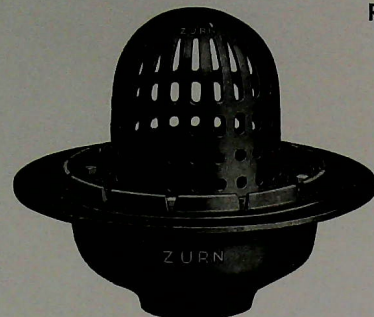
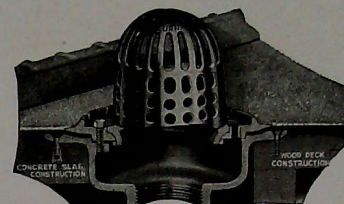


Fig. Z-100

Function—Normal water flow is through roof level inlets in gravel guard, representing primary drainage. When water flow exceeds capacity of these inlets, it rises to auxiliary drainage in dome which is designed for ample inlet capacity over outlet.

Clamping Device—Four heavy brass bolts secure directly to drain body. Clamping surfaces broad and plane, eliminating bending and cracking of roof felts. Integral gravel guard and primary drainage form part of clamping collar.



Installation Detail

Dome at roof level eliminates dirt accumulation and clogging. Drain Dome is held firm and secure with a bayonet type locking device which permits easy removal and replacement. Excess inlets provide for rapid drainage when water flow exceeds capacity of roof level inlet.

Dome—Dome held firm with bayonet type locking device—easily removable for cleaning. Ample inlet area eliminating clogging.

Roof Fastening—Simple and secure by means of counter-sunk holes in drain body to provide anchorage to roof construction. All screws or bolts beneath flashing.

Tar Exclusion—By cutting felts to butt edge of drain and securing top plies only, under clamping collar, movement of tar into drain is virtually eliminated.

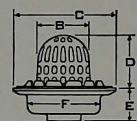


Fig. Z-100

Z-100 Roof Drain

Zurn Z-100 Roof Drain is recommended for flat roofs and gutters of wood, cement, steel, pre-cast slab and other composition.

Supplied in Dura-coated cast iron, galvanized or bronze bodies, domes and clamping collars, heavy brass clamping bolts, threaded or caulk outlets.

DIMENSION CHART							LIST PRICES		
A Pipe size	B in.	C in.	D in.	E in.	F in.	Wt. lbs.	Coated (DC)	Galv. (G)	All bronze (BR)
2-3-4	8	16	8	5 1/4	11 1/2	40	\$16.00	\$21.50	\$40.00
5	8	16	8	5 1/4	11 1/2	42	19.50	25.00	49.00
6	8	16	8	5 1/4	11 1/2	48	21.50	27.00	54.00
8	8	16	8	5 1/4	11 1/2	54	30.00	39.50	71.50

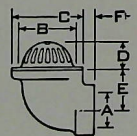


Fig. Z-185

Z-185 Cornice Drain

Zurn Cornice Drain, Z-185, is recommended for cornices, balconies, porches, window sills and other roof locations where conditions require positive seepage control. This type drain is furnished in Dura-coated iron galvanized or bronze bodies, dome strainers; clamping collars of polished bronze; outlets threaded.

DIMENSION CHART							LIST PRICES		
A Pipe size	B in.	C in.	D in.	E in.	F in.	Wt. lbs.	Coated (DC)	Galv. (G)	All bronze (BR)
2	3 3/4	4 1/2	1 1/2	2 1/2	1 1/2	5	\$ 6.00	\$ 7.00	\$ 8.00
3	4 3/4	6	2	3	1 1/2	7 1/2	7.50	9.00	11.00
4	4 3/4	6	2	3	1 1/2	9	9.00	11.00	13.00

Z-150 Roof and Deck Drain

This drain can be used with any type of flat roof or deck wherein foot traffic would make use of dome type strainer impractical. Supplied in Dura-coated cast iron, galvanized or bronze bodies, frames and clamping collars, with heavy brass clamping bolts, threaded or caulk outlets.

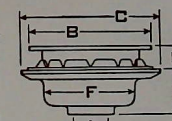


Fig. Z-150

DIMENSION CHART							LIST PRICES			
A-pipe size	B in.	C in.	D in.	E in.	F in.	Wt. lbs.	Coated (DC)	Galv. (G)	All bronze (BR)	W/bronze frame and strainer
2-3-4	13 1/4	16	2	5 1/4	11 1/2	49	\$20.00	\$26.00	\$43.00	\$31.50
5	13 1/4	16	2	5 1/4	11 1/2	51	24.50	31.10	52.50	39.00
6	13 1/4	16	2	5 1/4	11 1/2	55	27.00	35.00	61.00	45.50
8	13 1/4	16	2	5 1/4	11 1/2	60	36.00	45.50	73.50	55.00

Z-190 Vertical Expansion Joint

Zurn Vertical Expansion Joint provides for expansion and contraction wherever necessary in roof drain construction. It is supplied with Dura-coated cast iron bodies and wedged collars, heavy cast bronze sleeves with finished surfaces, graphited asbestos packing rings, and heavy steel bolts, with brass wing nuts. The outlet is shown threaded but can be furnished either spigot or hub when specified.

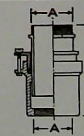


Fig. Z-190

DIMENSION CHART				LIST PRICES		
A Pipe size	B—Inches		Wt. lbs.	Coated (DC)	Galv. (G)	All bronze (BR)
	Min.	Max.				
2	7 1/2	12	8	\$ 5.50	\$ 6.50	\$ 9.00
3	7 1/2	12	11	7.00	8.50	12.00
4	7 1/2	12	13	8.00	10.00	14.00
5	7 1/2	12	17	11.00	13.50	18.00
6	7 1/2	12	18	13.00	16.00	22.00
8	7 1/2	12	30	21.00	26.00	36.00

Wade "Accessible" Water Cooled Grease Trap



Fig. D-220

Separating grease from hot waste water by sudden chilling, the WADE Water Cooled Interceptor recovers more grease per gallon than other types. Cold water is constantly circulating around the entire interior, walls, bottom, and central partition, utilizing maximum cooling area. Water jacket is cast integral with the WADE Interceptor and must not be confused with small sectional jackets which occupy but fractional area of trap.

DIMENSIONS—INCHES

Size	A	B	C	D	E	F	G	H	I	J	K
Small—No. 1.....	15	9 1/4	2 3/4	10 1/4	10	13	2	3 1/4	10	4 1/2	2 3/4
Government—No. 2.....	17	11 3/4	2 3/4	12 3/4	12 1/2	16	2	3 1/4	12	4 1/2	2 3/4
Large—No. 3.....	23	17	3	18	16	20	3-4	1 3/4	16	6 1/2	3 3/4
Extra Large—No. 4.....	28	19 1/2	3 1/2	20 1/2	20	25	3-4	1 3/4	18	6 1/2	3 3/4

SPECIFICATIONS

LIST PRICE

Size	Grease, lbs.	Gal. water per hour	Weight, lbs.	Enamel painted	Enameled in or out	Enameled in and out
Small—No. 1.....	25	75-100	115	\$48.00	\$60.00	\$72.00
Gov't—No. 2.....	40	150-250	250	75.00	On Application	On Application
Large—No. 3.....	80	250-350	560	140.00	On Application	On Application
Ex. Large—No. 4.....	115	550-650	825	180.00	On Application	On Application

Wade "Accessible" All-Purpose Interceptors

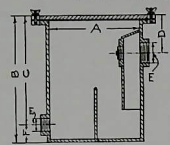


Fig. D-200

Recommended for all purposes where water cooled traps are not required. Larger sizes are inexpensive, efficient traps for general hospital use and as optical and dental laboratory interceptors.

All sizes fitted with central baffle plate. Cover easily removed for cleaning. Larger size made on order.

Size I.D.	A	B	C	Fig. 200 D	E	F	Wt., lbs.	Grease, lbs.	Gal. per hour	List price
6x10	6	10 1/4	8	3 3/4	1 1/2	2 3/4	25	3	20-30	\$12.00
8x10	8	10 1/4	8	3 3/4	1 1/2	2 3/4	35	8	30-45	14.00
10x12	10	13	10	4 3/4	2	3	55	20	65-85	17.00
14x14	14	15	12	5	2	3	110	40	100-150	23.00
14x18	14	19	15	5	2-3	3 1/2	125	60	150-250	30.00
18x18	18	22	18	8	3	3 1/2	250	80	250-350	40.00

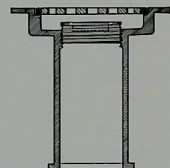


Fig. D-440

Wade "Accessible" Laundry Floor Drain for Use in Bungalows

Made with brass plug to eliminate the danger of back water. Plug may be removed when laundry is in use.

Made in one size only.

2-in. drain—4-in. strainer

List price.....\$3.00

Wade "Accessible" Balcony or Canopy Cornice Drain

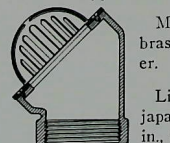


Fig. D-466

Made with brass strainer.

List price japanned: 2-in., \$7.00; 3-in., \$8.00.

Wade "Accessible" Solid Brass Bell Traps

Fig. D-468

—6 x 6 in., \$5.50; 9 x 9 in., \$10.00.

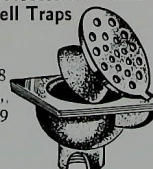


Fig. D-468

Wade "Accessible" Floor Drains

Recommended for all industrial purposes in dairies, breweries, factories, etc. Heavy grate will support trucking. Secondary strainer prevents sewer stoppage. Not furnished with clamp ring unless so ordered. Drain also made with inside caulking connection.

A	B	C	D	E	F	Wt.	List price
2	17 1/4	10	6	2	4	53	\$14.50
3	17 1/4	10	6	2	4	53	14.50
4	17 1/4	10	6	2	4	53	14.50
4	21	14	6	2	4	78	23.00
5	21	14	6	2	4	78	24.00
6	21	14	6	2	4	78	25.00
8	21	14	6 1/2	2	4 1/2	85	28.00

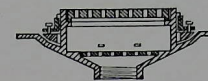


Fig. D-435

Fig. D-435—For any kind of floor where there is no heavy trucking.

Fig. D-437—Heavy Grate. For any kind of floor, also where there is heavy trucking.

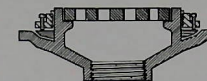


Fig. D-437

WITH OR WITHOUT FLASHING RING

Size, in.	2	3	4
Weight, lbs.	45	45	45
List price	\$14.00	\$14.00	\$14.00

FIG. D-417—SHALLOW BUCKET FLOOR DRAIN

Size, in. 2 3 4

Square Type—9 x 9 in.

Weight, lbs.	2	27	27
List price	\$12.00	12.00	12.00

Square Type—12 x 12 in.

Weight, lbs.	70	70	70
List price	\$16.00	16.00	16.00

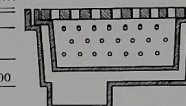


Fig. D-417

Wade "Accessible" Deep Bucket Floor Drain Basins

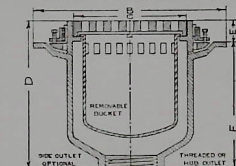


Fig. D-381

This drain is fitted with removable sediment bucket for use in plants where refuse is washed into sewer. Side outlet is optional.

A	B	C	D	E	F	Wt.	List price
2	17 1/4	10	13	2	11	70	\$21.50
3	17 1/4	10	13	2	11	70	21.50
4	17 1/4	10	13	2	11	70	21.50

Fig. D-418—Deep Bucket—Square Type Floor Drain.

Size, in. 2 3 4

Weight, lbs.	80	80	80
List price	\$19.00	19.00	19.00

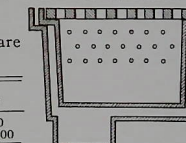


Fig. D-418

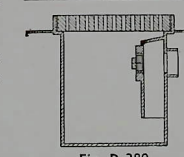


Fig. D-380

Recommended for all types of floors in laundries, factories, garages, service stations, packing plants, industrial plants, etc., wherever

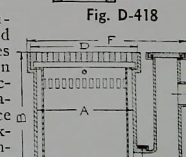


Fig. D-388

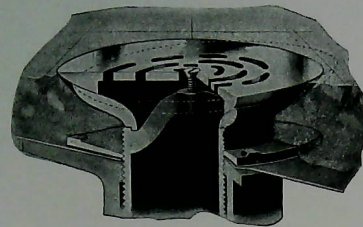
wastes accumulate upon floors to be washed into sewers.

Drains priced without removable buckets. Add to list as shown if bucket is required.

Size I. D.	A	B	Fig. 380 C	Fig. 388 C	D	E	Fig. 380 F	Fig. 388 F	Fig. 388 Wt., lbs.	Fig. 380 list price	Fig. 388 list price	Add for bucket
6x10	6	12	4½	3½	6	2	11	13	75	\$14.00	\$17.00	\$ 4.00
8x10	8	12	5	3½	8	2	13	14½	90	16.00	19.00	6.00
10x12	10	14½	6	4	10	3	16	18½	125	19.00	23.00	8.00
14x14	14	15½	6¾	5	14	3	19	23	210	22.00	27.00	12.00
14x17	14	19½	7¼	5½	14	4	19	23	250	24.50	32.50	12.00
18x18	18	21	10	5½	18	6	22	28	360	34.00	44.00	16.00

FLOOR OR SHOWER DRAINS

Heavy cast bronze strainer adjustable to plane of floor by loosening the securing screw which operates in slotted opening in the strainer. This desirable design definitely eliminates danger of cut feet and infection caused by projecting drain edges.



Installation Detail

The most striking of several important designed features of Zurn Floor or Shower Drains is the ability of the strainer to be adjusted to the plane of the floor. This is a typical example of the continual thought Zurn is giving to improving plumbing systems.

Wherever Zurn Floor or Shower Drains are installed this designed feature definitely eliminates the danger of accidents and breakage. Strainer is attached by a single screw at the center and is inserted through a slotted opening in the strainer, permitting strainer to be tilted and locked out of perpendicular if necessary to accommodate floor plane.

Seepage Control—Seepage around edge of strainer is prevented by applying sealing compound under strainer edge which is designed to compensate for cement floor shrinkage. Tightening of strainer screw compresses compound. A watertight installation is always assured. Adjustable sleeve for variable

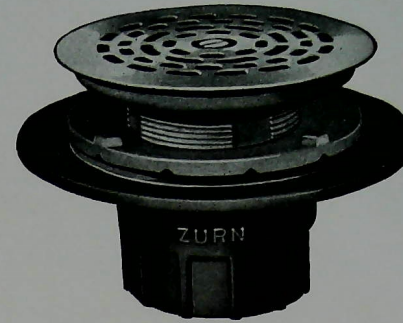


Fig. Z-200

floor thicknesses is another practical Zurn feature. Seepage pan design permits metal flashing to fit without shaping. Clamping collar combined with copper friction ring and adjustable screw sleeve, with raised lugs, provide means to forcibly drive collar to assure a joint that absolutely is watertight. Seepage flows through horizontal slots in clamping collar and through vertical seepage channels in adjustable sleeve. A tubular fiber shield prevents clogging of channels when cement is poured.

Testing Provisions—Body threads are standard pipe size, enabling standard iron pipe plug or nipple with cap to be inserted for testing.

Catalog—Catalog describes Zurn Drains—Floor or Shower Drains—in greater detail and includes cross sectional blueprint drawings showing every advantageous feature. It will be sent upon request.

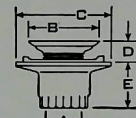


Fig. Z-200

Z-200 Drain

This drain is recommended for shower rooms and stalls in toilet rooms and floor areas of concrete, tile, terrazzo, or other composition, where seepage control is required. This unit is supplied with heavy bronze plated strainer, extra heavy Dura-coated cast iron, galvanized or bronze bodies, angularly and vertically adjustable strainer with clamping collar and threaded outlets. (Z-210 caulk outlet.)

DIMENSION CHART						LIST PRICES			
A-pipe size	B-str. diam.	C inches	D inches	E inches	Wt. lbs.	Coated (DC)	Galv. (G)	All bronze (BR)	Chrome str.
1½-2	4 5	7	1-2	3½	9½	\$7.50	\$9.00	\$13.50	+\$6.80
3	5 6 7	9	1-2	4	15	10.00	12.00	17.50	.80
		9	1-2	4	13½	11.50	13.50	19.00	1.00
		9	1-2	4	16	13.00	15.00	20.50	1.50
4	5	9	1-2	4	16½	11.00	13.50	19.00	.80
	6	9	1-2	4	17	12.50	15.00	20.50	1.00
	7	9	1-2	4	17½	14.00	16.50	22.00	1.50
Deduct for clamping collar						1.00	1.50	2.50	

(*) Denotes recommended strainer size having proper drainage capacity for size of outlet.

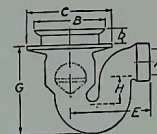


Fig. Z-270

Z-270 Floor Drain with Backwater Valve

Recommended for any installation where backwater pressure may be encountered. Furnished with heavy Dura-coated cast iron, galvanized, or bronze bodies. Bronze strainer adjustable to floor plane, glass or copper float, positive seating, outlets for iron or soil pipe connection.

DIMENSION CHART						LIST PRICES			
A-pipe size	B-str. diam.	C in.	D in.	E in.	Wt. lbs.	Coated (DC)	Galv. (G)	All bronze (BR)	
1½-2	5	7	1-4	6	9	6½	\$17.00	\$20.00	\$26.00
3	5	9	1-4	8	11	9	21.00	24.20	35.00
	7	9	1-4	8	11	9	27.00	27.20	38.00
	7	9	1-4	8	11	9	29.00	29.50	34.50
4	7	9	1-4	8	11	9	29.00	29.50	34.50
Deduct for back water control 2-3*						\$3.00	4*	\$4.00	

Z-250 Combined Drain and Trap

This drain is suitable for any type of floor area of concrete, tile, terrazzo, or other composition and combines integral trap. Heavy bronze strainers adjustable to floor level (angular and vertical), heavy Dura-coated cast iron, galvanized or bronze bodies, with clamping collar, outlets for threaded pipe or caulk connection.

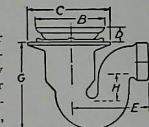


Fig. Z-250

DIMENSION CHART						LIST PRICES			
A-pipe size	B-str. diam.	C in.	D in.	E in.	Wt. lbs.	Coated (DC)	Galv. (G)	All bronze (BR)	
1½-2	4 5	7	1-2	6	9	6½	\$13.00	\$16.50	\$24.50
		7	1-2	6	9	6½	14.00	17.50	25.50
3	5	9	1-2	8	11	9	26	18.00	21.50
	6	9	1-2	8	11	9	26½	19.50	23.00
	7	9	1-2	8	11	9	27	21.00	24.50
4	5	9	1-2	8	11	9	28	22.50	27.60
	6	9	1-2	8	11	9	28½	24.00	29.10
	7	9	1-2	8	11	9	29	25.50	30.60
Deduct for clamping collar						1.00	1.50	2.50	

Z-280 Floor or Area Drain

Recommended for any floor construction, grate adjustable to floor plane. Furnished in heavy Dura-coated cast iron, galvanized or bronze, outlet threaded or inside caulk.

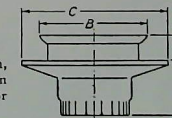


Fig. Z-280

DIMENSION CHART						LIST PRICES			
A-pipe size	B-str. diam.	C inches	D inches	E inches	Wt. lbs.	Coated (DC)	Galv. (G)	All bronze (BR)	
1½-2	5	7	1-4	2½	7	\$6.50	\$7.35	\$10.20	
3	5	9	1-4	2¾	9	7.75	9.00	12.75	
	7	9	1-4	2¾	10	10.75	12.00	15.30	
4	7	9	1-4	2¾	12	11.50	13.20	16.00	
Strainer rest 3" high add						.50	.60	.80	
Strainer rest 4" high add						1.00	1.20	1.60	

SWIMMING POOL DRAINS AND DEVICES

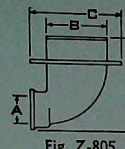


Fig. Z-805

Z-805 Main Outlet Swimming Pool Drain

Side outlet construction generally simplifies installation. Zurn Discharge Drain, Z-805, has an exceptionally large drainage area and should be installed where quick drainage of pool is desirable. Body is Dura-coated cast iron with polished bronze strainers and rims. Hub or threaded outlet as required.

DIMENSION CHART					LIST PRICES				
A Pipe size, in.	B in.	C in.	D in.	E in.	Wt., lbs.	Coated (DC)	Galv. (G)	All Bronze (BR)	Bronze Rim and Strainer
4-5-6	12x12	17x17	4 3/4	13 3/4	85	\$34.00	\$45.50	\$94.00	\$43.00 \$52.50
Clamping Collar—Add.....					2.00	2.50	3.50		
Chrome Plated Strainer—Add.....							4.00		
White Metal Strainer—Add.....							9.00		

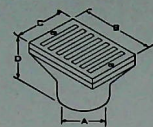


Fig. Z-820

Z-820-Z-830 Gutter Drains

Designed for scum and other narrow gutters. Bronze body—polished strainers. Outlets threaded. Z-830 Angle Outlet

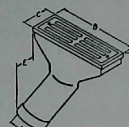


Fig. Z-830

DIMENSION CHART					LIST PRICES			
A Pipe size, in.	B in.	C in.	D in.	Wt., lbs.	Pol. or N.P. strainer	Chrome strainer	W. Metal strainer	
1 1/2-2	4	2 3/4	2 1/4	1 3/4	\$4.50	\$5.10	\$6.00	
1 3/4-2	9	1 1/2	2 3/4	2 1/4	7.00	8.00	9.00	
1 1/2-2 1/2	10	2 3/4	2 3/4	3 1/4	8.50	9.50	11.25	
2-3	5 1/2	2 3/4	2 1/2	3 3/4	7.00	8.00	9.75	
2-3	12	4	2 3/4	15 1/2	15.00	16.50	18.50	
Z-830 1 1/2-2	9	2 1/4	7 1/4	7	10.50	11.10	11.50	

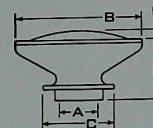


Fig. Z-850

Z-850 Flushing Inlet with Anchorage Flange

The Zurn Inlet, Z-850, is designed for dual service. It discharges a diverging spray for flushing the surface of the pool in addition to supplying clean water for circulation. It is designed for use where anchorage is desirable and where flashing is not required. Regularly supplied with heavy cast bronze bodies, polished convex slotted heads, threaded pipe connections. (Perforated or slotted flat face plates furnished if desired.)

DIMENSION CHART					LIST PRICES			
A Pipe size, in.	B in.	C in.	D in.	E in.	Wt., lbs.	Pol. or N.P. Head	Chrome Head	W. Metal Head
1 1/2-2-2 1/2	9	5	1	4	5 1/2	\$9.50	\$10.10	\$11.00

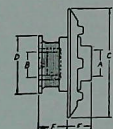


Fig. Z-865

Z-865 Swimming Pool Vacuum Cleaning Connection

The unit Z-865 is an exceptionally practical swimming pool vacuum cleaner connection. Ideally suited for pool cleaning systems. Bodies are heavy cast bronze Dura-coated. Faces with 2-in. iron pipe cleaning connection are polished bronze. This connection is designed with adjustable sleeves with clamping collars and threaded for pipe connections.

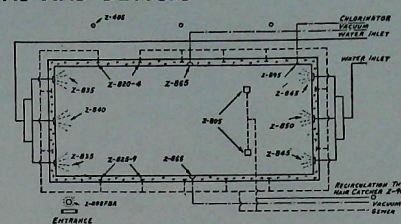
DIMENSION CHART					LIST PRICES				
A Pipe size, in.	B in.	C in.	D in.	E in.	Wt., lbs.	Coated (DC)	Galv. (G)	All Bronze (BR)	Chrome Face
1 1/2-2	2	9 1/2	5	1 3/4-3	2 3/4	14	\$10.50	\$11.50	\$14.50
3	2	9 1/2	5	1 3/4-3	2 3/4	15	11.50	12.50	16.00
4	2	9 1/2	5	1 3/4-3	2 3/4	16	12.50	14.00	17.50
Less Clamping Collar—Deduct.....						1.00	1.50	2.50	

Z-855 Recirculating Fitting

Dura-coated body, adjustable bronze face. New flow regulating device (Detail "A") assures correct circulation. Complete line of standard pool inlets and outlets available.



Fig. Z-855



CLOSET AND LAVATORY CHAIR CARRIERS

The constantly increasing use of wall hung fixtures has created a demand for specialization in this field, taking into account the necessary requirements to compensate for varying building construction. The features incorporated in Zurn Carriers provide for universal adjustment during the process of installation and for rigidity and security after installation is made.

Outstanding features include:

Cantilever Construction
Adjustable Bearing Screws
2-in. Lateral Adjustment
Ample Vertical Adjustment
Provision for Roughing Dimensions

Catalog Z. C. includes cross sectional prints showing mechanical and design features in detail. A copy will be sent upon request.

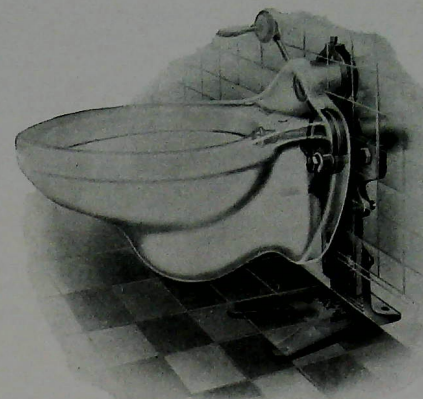


Fig. Z-1201 Closet Carrier

The Zurn Z-1201 Closet Carrier, illustrated above, incorporates all the features necessary for simple installation, coupled with ample weight for rigidity of construction to assure rigid installation. Note heavy Ratchet Type Base construction.

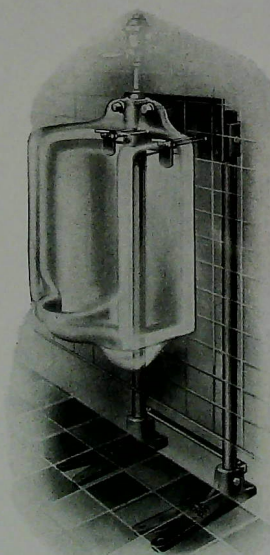


Fig. Z-1221 Carrier

The Zurn Carrier, Z-1221, is an adaptation for modern wall hung urinal bowl. In ordering carriers specify type by referring to bowl, giving manufacturer's name and bowl figure number. This type carrier is supplied with extra strong bodies and feet. "Dura-coated" finish. 1½-in. extra heavy steel legs

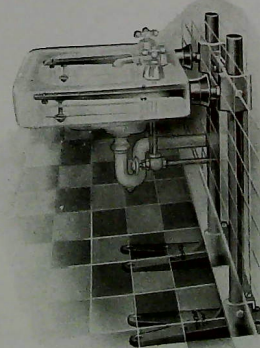


Fig. Z-1230 Carrier

The Zurn Carrier, Z-1230, is designed for lavatories in every kind of public or private place where concealed carrier arms are desirable. Locking devices for rigidly securing fixtures are available for use in mental hospitals and insane asylums. In ordering, specify lavatory by manufacturer's name, number and size

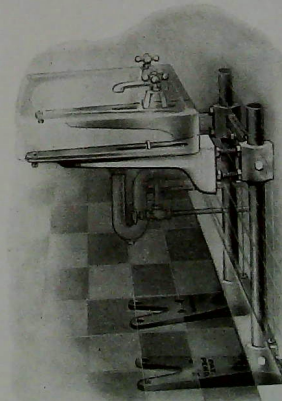


Fig. Z-1235 Carrier

The Zurn Carrier, Z-1235, is recommended for heavy lavatories, sinks, sterilizers, etc., public or private, with exposed carrier arms available either painted or enameled. Specify fixture by manufacturer's name, figure number and size when ordering carriers. This type carrier is furnished with white enamel arms, Dura-coated brackets, legs and feet

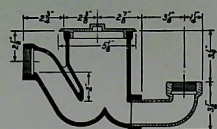
All Zurn Carriers have leveling or adjusting screws, and use of cantilever construction assures full support of fixtures entirely on the carrier and not on the wall.

BATH AND LAVATORY TRAPS

Zurn Bath and Lavatory Traps are of unique design and incorporate unusual self-cleaning features. Besides completely changing water seal with each discharge from tub, the design causes water to swell strongly and wash inside walls. Large cleanout gives wide excess space and syphonage of water seal is definitely resisted by design features. The seal itself is a Zurn design that has been widely approved and used. It is

a positive guard against backing up of sewer gases and odors. It would be difficult to find more ideally designed traps than Zurn's.

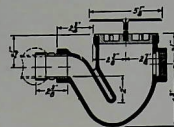
Blueprint cross-sectional drawings in Catalog No. 29C show the excellent design and construction features of the entire line of Zurn Traps. A copy will be sent upon request.



Z-1101 Residence and Apartment Bath Trap

With C.P. Cleanout. Design assures complete change of water seal with each discharge of tub—can be installed between 6-in. joints, 1½-in. connections

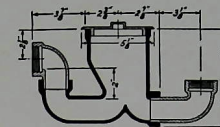
List prices—
Coated (DC)..\$4.40 Galv. (G)..\$6.00
All Bronze (BR)..\$10.00



Z-1108 Dwelling House Bath Trap

Incorporating self-cleaning features—complete change of seal with each discharge of tub—cleanout fitted with C.P. Access Cover for proper leveling at finished floor—easily installed between 6-in. joints, 1½-in. connections

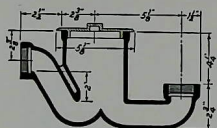
List prices—
Coated (DC)..\$6.10 Galv. (G)..\$7.10
All Bronze (BR)..\$10.10



Z-1111 Adjustable Bath Trap

Self-cleaning with cleanout opening large enough for easy access—chromium plated cover, adjustable outlet, installation within 6-in. joints, 1½-in. connections

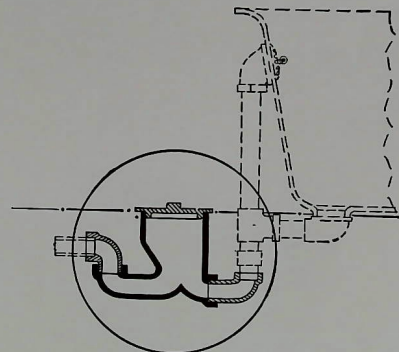
List prices—
Coated (DC)..\$5.00 Galv. (G)..\$6.90
All Bronze (BR)..\$12.00



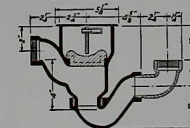
Z-1120 Tub and Shower Trap

Self-cleaning and rapid discharge—C.P. Cleanout large enough for easy cleaning, installed within 6-in. joints, 2-in. connections. Particularly adaptable for therapeutic baths

List prices—
Coated (DC)..\$5.50 Galv. (G)..\$7.00
All Bronze (BR)..\$13.00



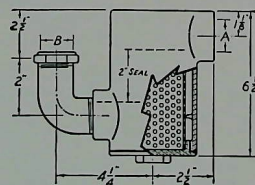
Detail of Installation



Z-1140 Hospital Bath Trap

Non-syphoning and self-cleaning, adjustable 1½-in. connections for any lateral direction, cleanout protected by seal, floor level adjustment, C.P. Cover for proper finishing.

List prices—
Coated (DC)..\$6.80 Galv. (G)..\$10.90
All Bronze (BR)..\$21.40



Z-1175 Hair Interceptor

Cast bronze of required finish, removable bronze intercepting screen for cleaning, correct replacement assured by unique design, ideal for use in barber shops, beauty parlors, etc.

List prices—
Polished or Nickel plated bronze...\$16.00 Wt. 6 lbs. A—Outlet B—Inlet
Chromium plated bronze..... 20.00 Wt. 6 lbs. 1¼-1½ I.P. 1¼-1½ Slip

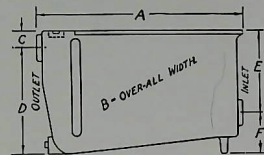
THE "GREASEPTOR"



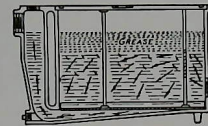
Fig. Z-1170-71

short of so doing. There are three outstanding points to consider in the problem of grease interception:

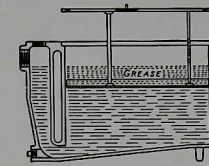
- (1) **Purpose**—To prevent grease from entering and clogging drainage and sewer lines.
- (2) **Method**—To separate, congeal, and intercept the grease as nearly as possible to the point of discharge from fixture.
- (3) **Essential Requisites**—Intercepting of full grease content in waste water; ease of grease removal; ease of thorough cleaning.



Full Rectangular Shape—Provides maximum water content, eliminating angles and slowing current movement to further extend grease separation and congealing. Uniform design makes possible the installation at floor level at minimum expense.



Operation—Inlet below water level immediately retards flow which is further accentuated by unique diffusing baffle immediately adjacent to inlet, causing breaking up and slowing down of flow before entering main intercepting chamber, and practically eliminating all turbulence, so that as grease congeals and rises the main flow of water continues through perforated bottom baffle which further retards flow and thus the clear water flows on to outlet.



Ease of Grease Removal—Cover and grease basket are made integral. Cover cannot be replaced without grease basket (deluxe model only). Full airtight gasketed cover is secured by four easily removable bolts, or if preferred, can be unsecured to body as gasket is airtight and, if connected with recirculating vents, there is no danger of foul air entering the building.

SPECIFICATIONS AND PRICE SCHEDULE

Size No.	Recommended for	Flow cap. gal. per hr.	List prices		Inlet and outlet conn. i.p. or hub in.	A Length in.	B Width in.	C in.	D in.	E in.	F in.
			Z-1171 Deluxe model	Z-1170 Standard model							
4-C	Small sinks	420	\$35.00	\$25.00	1½-2	18½	11½	2	9½	7½	3½
5-C	Medium sinks, small dishwashers	540	60.00	46.00	1½-2	20½	13½	2	9½	8	3½
7-C	Diet sinks, dishwashers	730	80.00	65.00	1½-2	22½	16½	2	9½	8	3½
9-C	Large sinks, large dishwashers	950	120.00	97.00	2-3	26½	17	2½	12½	10½	4½
15-C	Two or more sinks, institutional	1500	156.00 (standard model only)	156.00	3-4	32½	20	3½	14½	12	5½
24-C	Main drainage line installation	2400	275.00 (standard model only)	275.00	3-4	37	24	3½	14½	12½	5½

HOSPITAL, PLASTER AND DENTAL INTERCEPTORS

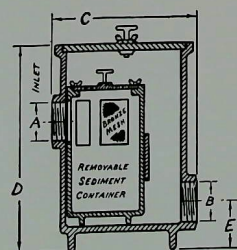


Fig. Z-1180

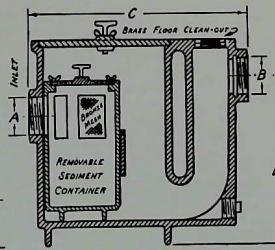


Fig. Z-1185

Invaluable for the interception of solids such as plaster of paris, cotton, lint, hair, etc. Adaptable also for unusual interception problems such as jewelry and optical grinding.

Waste water is all directed into removable sediment container from which none of the solids referred to can pass through, and the container is easily removable for cleaning and is so designed that its reinsertion into the trap is always in the correct position. The integral trap embraced in Fig. Z-1185 makes for simpler installation.

Interceptors regularly supplied in painted white enamel with brass fittings. Also available with porcelain enameled interior or exterior, with chrome plated fittings.

Z-1185 Hospital Plaster Interceptor

Porcelain enameled exterior with accessible cleanout for removing bronze mesh retainer—plaster and any other solids completely retained without restricting liquid flow—integral trap with cleanout assures correct installation—1½ or 2-in. connections.

List price \$148.00. Weight 190 lbs.

Z-1180 Dental Interceptor

Polished aluminum body with accessible cleanout cover for removing bronze mesh retainer for cleaning. All solids positively retained without restricting liquid flow—1½ or 2-in. connections.

List price \$42.00. Weight 8 lbs.

THE DURO COMPANY

ESTABLISHED 1915

DAYTON, OHIO

NEW YORK OFFICE: 50 Church street

LOS ANGELES OFFICE: 7267 Beverly Boulevard

BOSTON OFFICE: 175 High Street

SALES AND SERVICE BRANCHES IN ALL PRINCIPAL CITIES

THE DURO COMPANY are specialists in Water Treatment, Water Softening and Water Pumping Systems and Equipment.

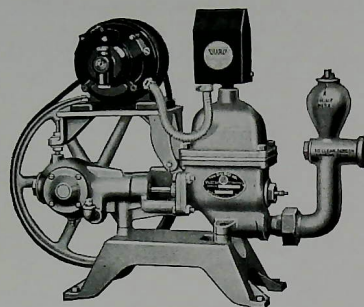
Manufacturers of Water Softeners for domestic and industrial application; Water Filters for removing iron, sediment, taste, color and odors; Automatic Electric Pumps for deep or shallow wells; Complete Water Systems; Pneumatic Galvanized Pressure System Tanks;

Power Pumps for operating with gasoline engine or from overhead power shaft and complete pump accessories.

Every part of every unit bearing the Duro Trade Mark is made under one factory roof, placing the entire responsibility for satisfactory and guaranteed service at one central point, THE DURO COMPANY, Dayton, Ohio.

"Over a Million Users"

Shallow Well Pumps



Capacities—230 to 720 gallons per hour.

Brass fitted throughout.

Double main phosphor-bronze bearings.

One-piece drop-forged steel crankshaft.

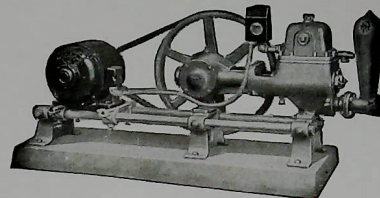
Two-pole automatic switch.

Repulsion-induction Duro motor.

Heavy Duty 100 Series Shallow Well Pumps

Equipped with Timken Roller Bearings

Capacities—800 to 2000 gallons per hour.



For unusually heavy pump service: Schools, swimming pools, large farms, estates, institutions, factories, etc.

SPECIFICATIONS

Model	Capacity, gal. per hr.	Motor, hp.	Pipe sizes, inches		Shipping weight, lbs.
			Suction	Dischg.	
250	250	1/4	1"	3/4"	100
360	360	1/4	1"	3/4"	105
500	525	1/2	1 1/2"	1"	120
720	720	1/2	1 1/2"	1"	130

Approximate space required—width 27 in., depth 14 in., height 25 in. Above pumps are equipped with AC 110 or 110-220-volt 60-cycle or DC motors. Odd cycle motors can also be furnished as required. Standard pressure 25-45 lbs. Above pumps can also be furnished with pressures up to 135 lbs. Specifications upon request.

Duro Deep Well Pumps and Systems

All strains central with the well, due to correct vertical design

Capacities: 160 to 2100 gallons per hour. Depths: 22 to 500 feet.

No. 900 Deep Well Pumps—Various combinations with 1/4 to 1 hp. R-I motors with capacities from 165 to 550 gallons per hour. Maximum depth to 400 ft., against a pressure of 45 lbs. per sq. in. Single acting, steel encased, open type, or all-brass, closed type well cylinders. Bronze bearings. One-piece drop forged steel crankshaft.

No. 3000 Heavy Duty Deep Well Pumps—With single acting cylinders furnished as steel encased open type, or all-brass closed type. Timken roller bearing equipped.

Equipped with alternating or direct current motors from 1 to 3 hp. Completely automatic. Either of the above models can be furnished with double acting well cylinders.

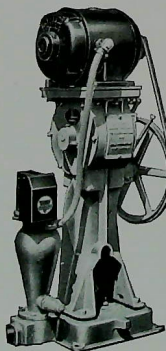
Capacity of deep well pumps depends on size of well, depth to water and amount of water required.

Send sketch of proposed installation together with following information and we will gladly make proper deep well water system recommendations.

Diameter of well. Total depth of well—Depth to water level. How many people will be served.

Number of bathrooms, listing all other water outlets.

Will water be used for sprinkling.



Complete Automatic Water Systems

A selection of any of the Duro shallow well pumps with vertical galvanized tank, pipe fittings and automatic air volume control with pressure gauge. Tanks in capacities of 30 to 1000 gallons. Pressure switch makes this unit completely automatic, with pressure regulated from 25 to 45 lbs.

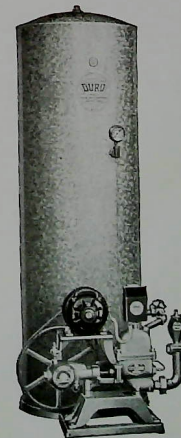
Furnished with either vertical (shown) or horizontal type pressure tank, for complete automatic water service.

Other Duro Products

For smaller homes the No. 8 pump and systems (230 gallons per hour).

For fresh water service the Nos. 80 and 250 Freshflow, a 230 or 250-gallon per hour pump with a 2 1/2-gallon tank mounted on pump.

Cellar drainers, well cylinders, air pumps, automatic switches, float switches, foot valves, and special deep well couplings, are included in the Duro line making every combination of models, sizes and capacities possible.



Complete Specifications for the Architect Upon Request.